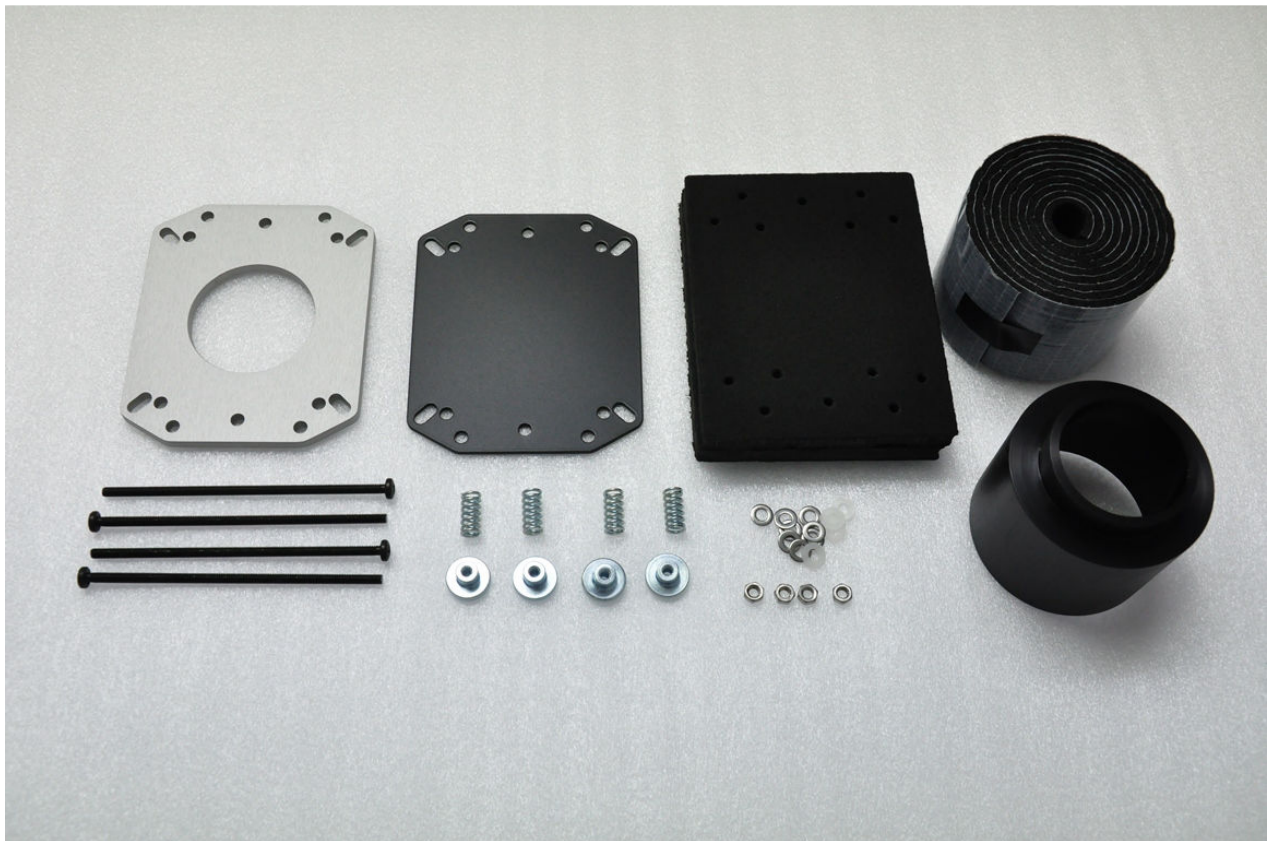


## LD Cooling Universal CPU Mounting Kit for COOLER EXPRESS

### Installation guide.



WEB: <http://www.ldcooling.com/>

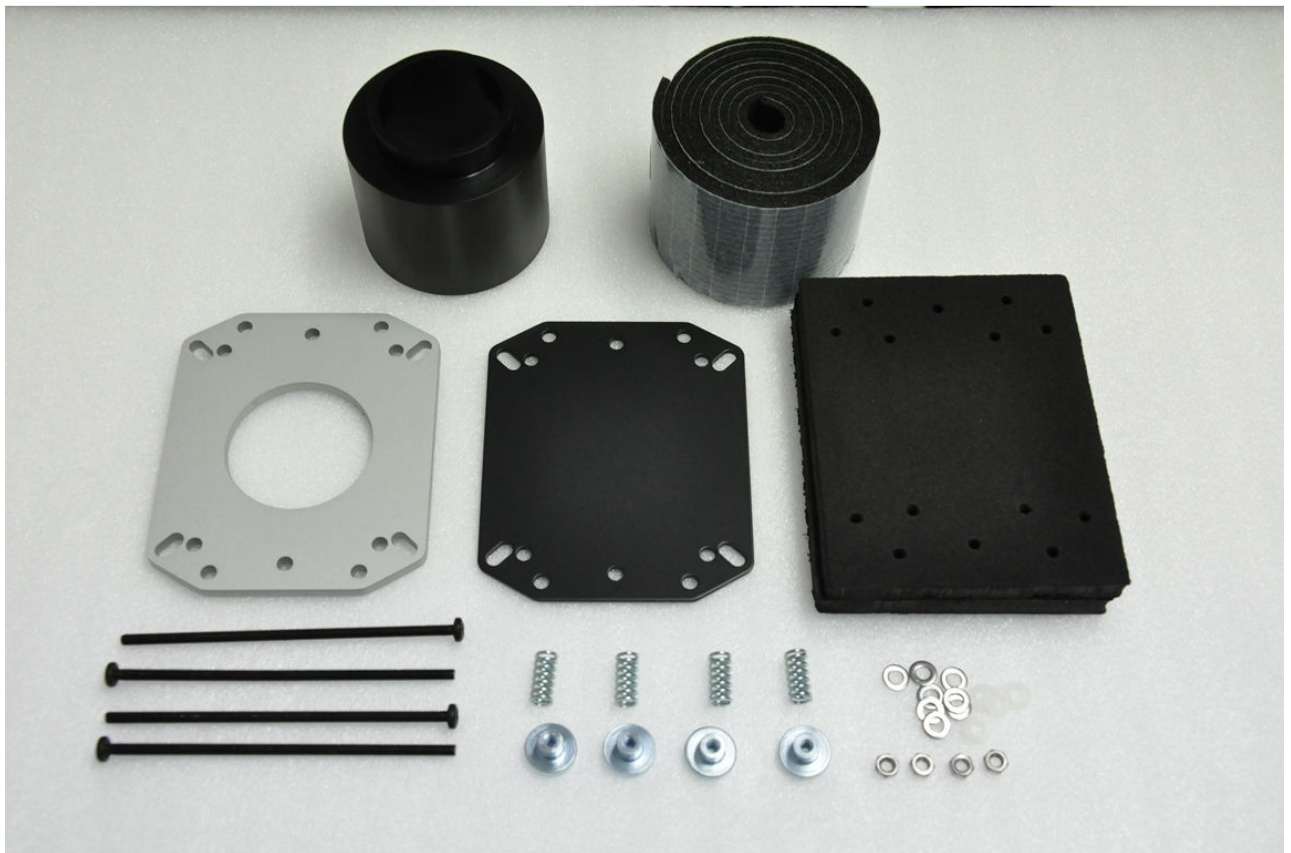
Email: [info@ldcooling.com](mailto:info@ldcooling.com)

Facebook: <http://www.facebook.com/LDcooling>

**LD Cooling Universal Mounting kit include:**

- Universal mounting kit for all sockets
- Backplate for all sockets
- Backplate insulation
- 150cm of Armaflex Insulation Tape with self adhesive backing
- 4 x Screws
- 4 x Nuts
- 8 x Stainless steel washers
- 4 x Plastic washers
- 4 x Springs
- 4 x Thumb Screws
- Installation manual

**Picture for Complete Kit:**



WEB: <http://www.ldcooling.com/>

Email: [info@ldcooling.com](mailto:info@ldcooling.com)

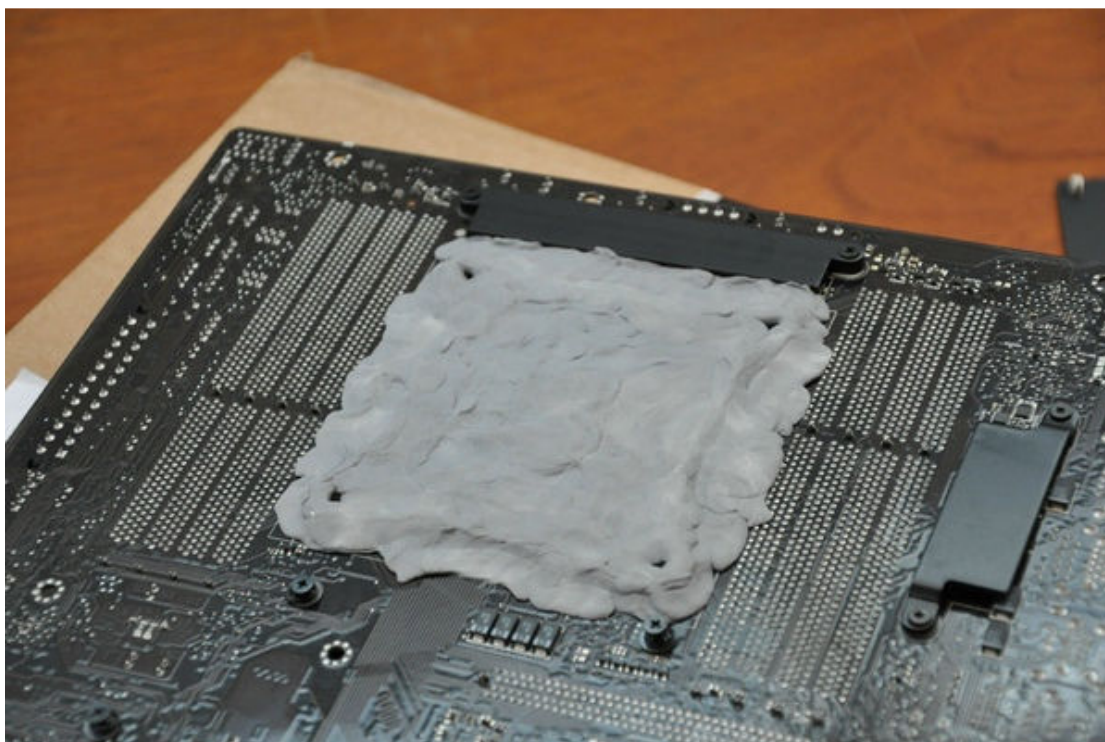
Facebook: <http://www.facebook.com/LDcooling>



## Motherboard preparation:

We recommend to use really popular material for sub-zero application these days called »art eraser«, »rubber eraser« or »kneaded eraser«. This material is not included in our kit, but you have it in standard COOLER EXPRESS mounting kit.

1. Use Art Eraser on the backside of the motherboard.



WEB: <http://www.ldcooling.com/>

Email: [info@ldcooling.com](mailto:info@ldcooling.com)

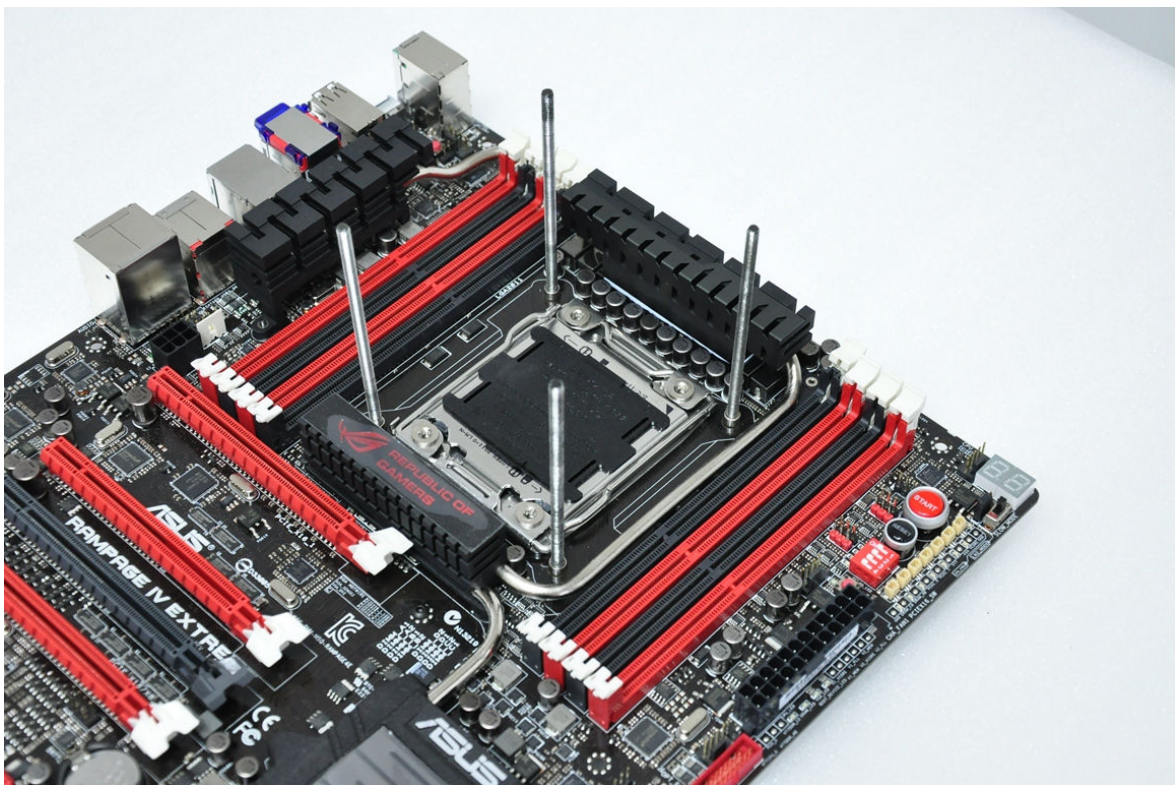
Facebook: <http://www.facebook.com/LDcooling>



2. Then use backplate insulation which is included with mounting kit, put universal backplate on it and install 4 x M4 screws through original motherboard backplate.



Socket 2011. Installed M4 screws through original motherboard backplate.



WEB: <http://www.ldcooling.com/>

Email: [info@ldcooling.com](mailto:info@ldcooling.com)

Facebook: <http://www.facebook.com/LDcooling>



3. We recommend to remove CPU hold down assembly and use »art eraser« like you can see on the pictures.

Add thin layer of »art eraser« around the socket.



You can protect condensor, memory slots on motherboard with tape.



WEB: <http://www.ldcooling.com/>

Email: [info@ldcooling.com](mailto:info@ldcooling.com)

Facebook: <http://www.facebook.com/LDcooling>





4. Install CPU hold down assembly back and continue adding »art eraser« around.

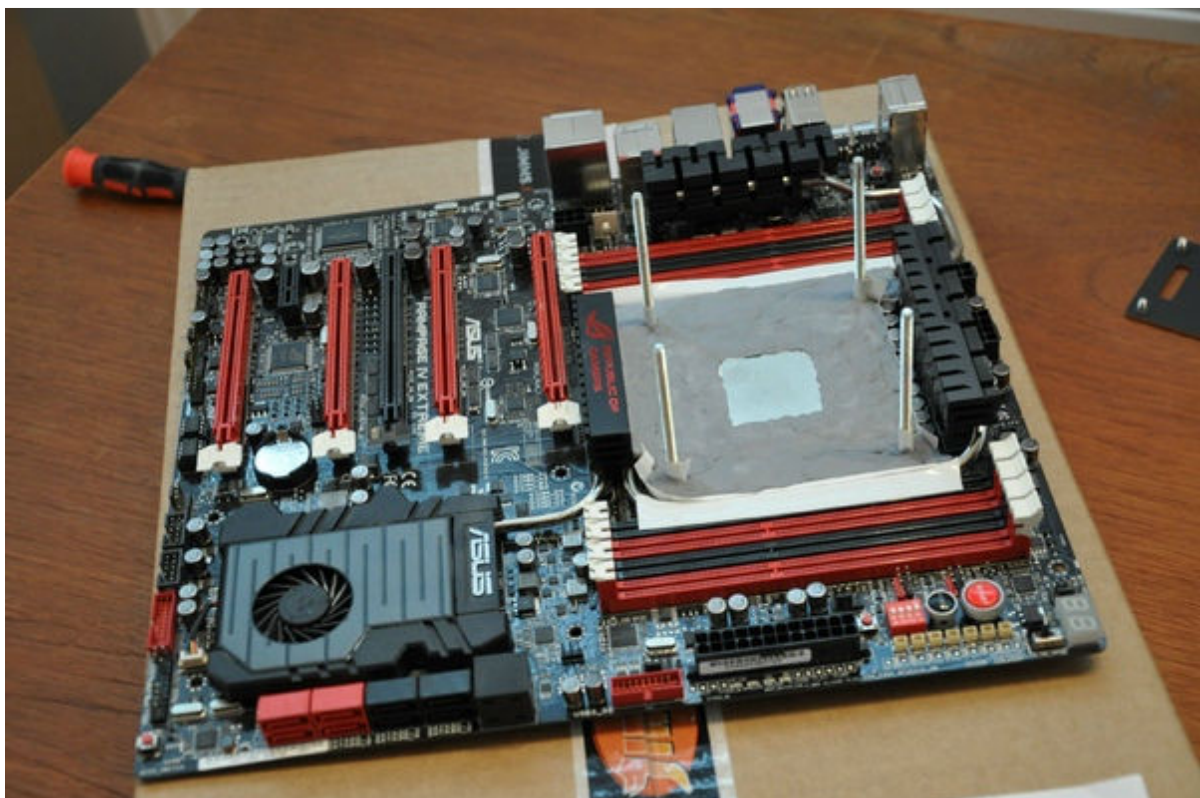


WEB: <http://www.ldcooling.com/>

Email: [info@ldcooling.com](mailto:info@ldcooling.com)

Facebook: <http://www.facebook.com/LDcooling>





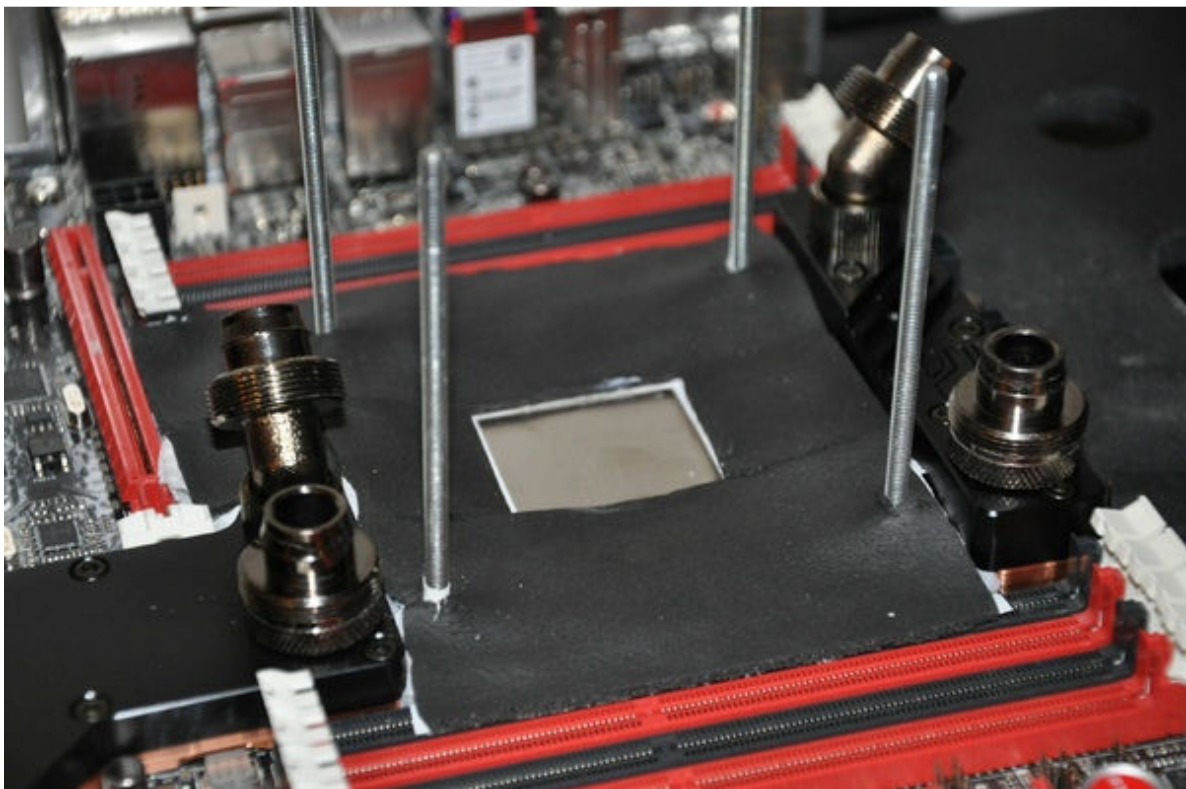
WEB: <http://www.ldcooling.com/>  
Email: [info@ldcooling.com](mailto:info@ldcooling.com)  
Facebook: <http://www.facebook.com/LDcooling>



5. Add one layer of »Kitchen/Bathroom Towel« on »art eraser«.



6. On the end use one layer of Armaflex Insulation Tape with self adhesive backing.



WEB: <http://www.ldcooling.com/>

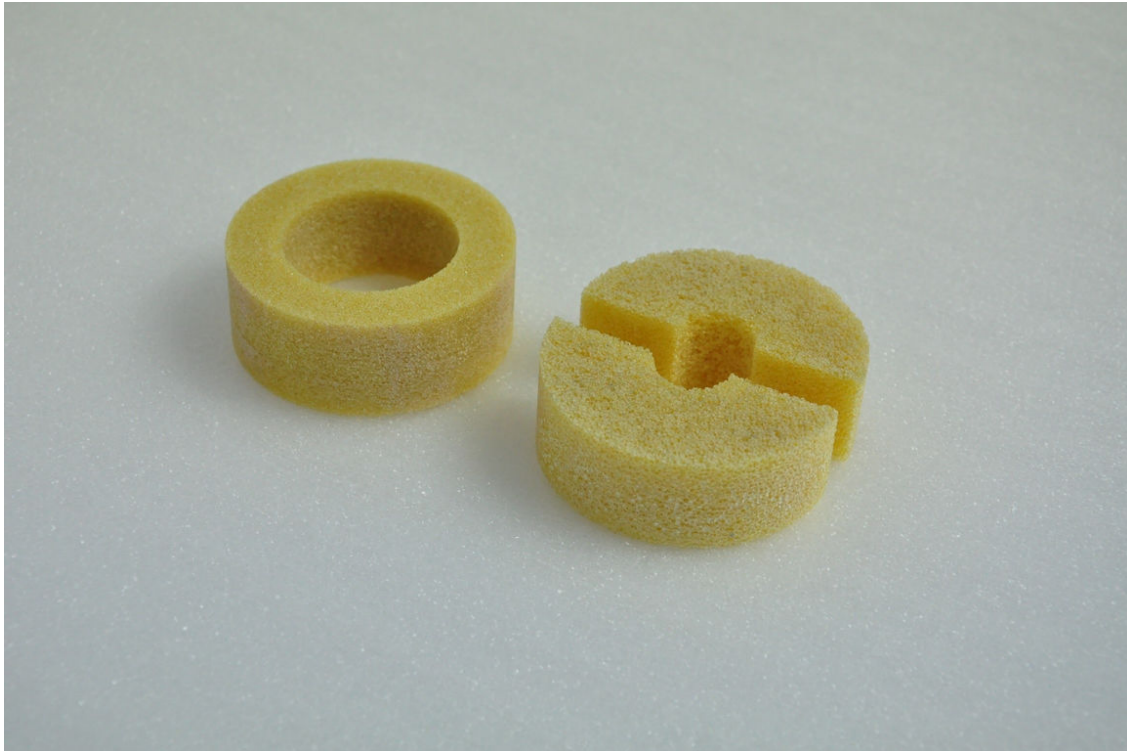
Email: [info@ldcooling.com](mailto:info@ldcooling.com)

Facebook: <http://www.facebook.com/LDcooling>

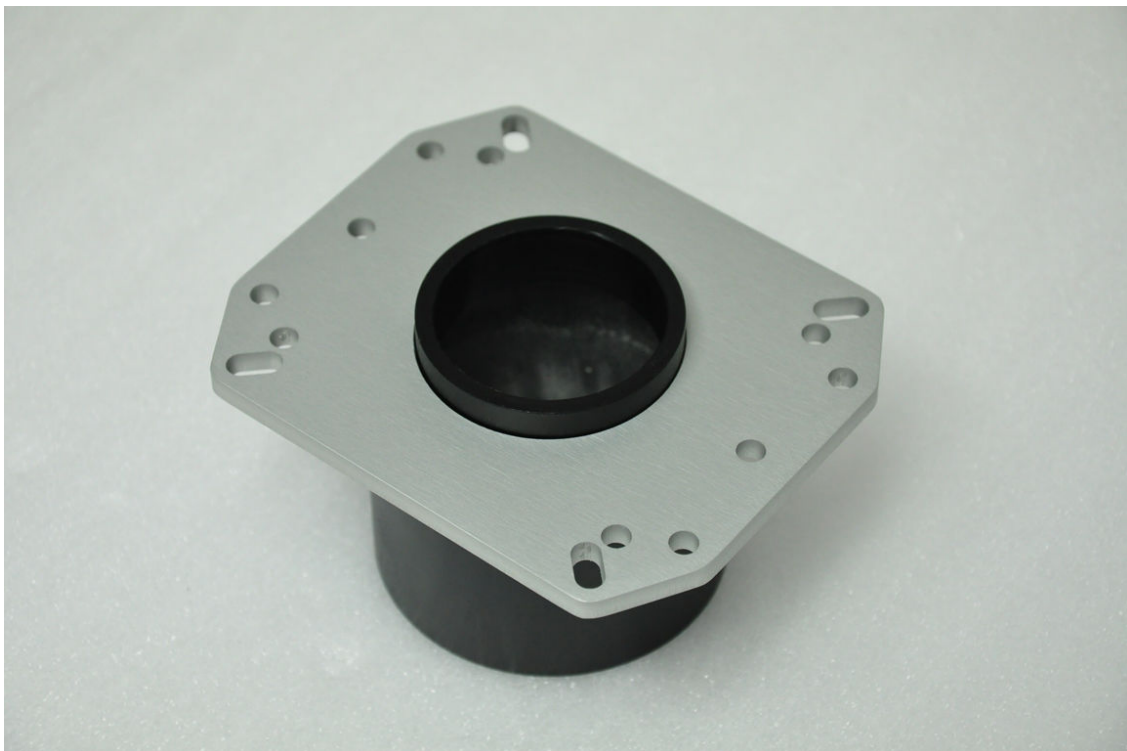


## Mounting installation:

Once motherboard insulation is done, use insulation blocks from original mounting and install it on NEW mounting kit one the same way as on old one.



1. Install Aluminium hold-down on black plastic.

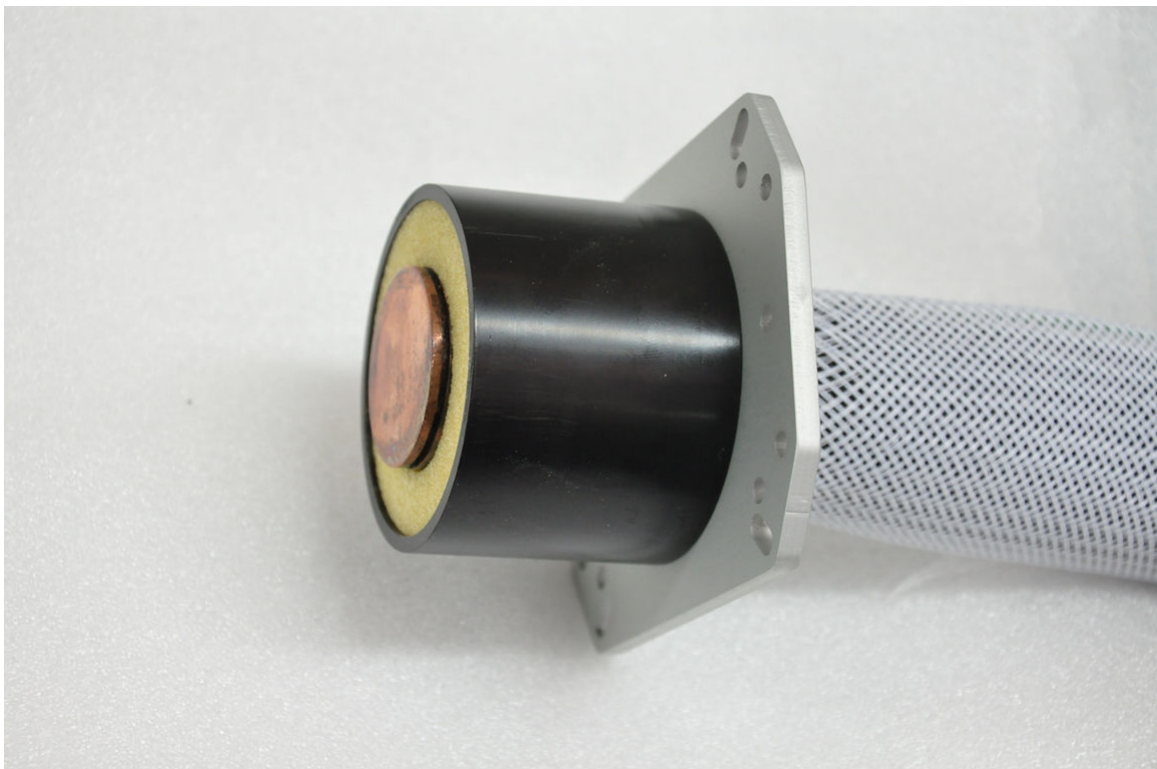
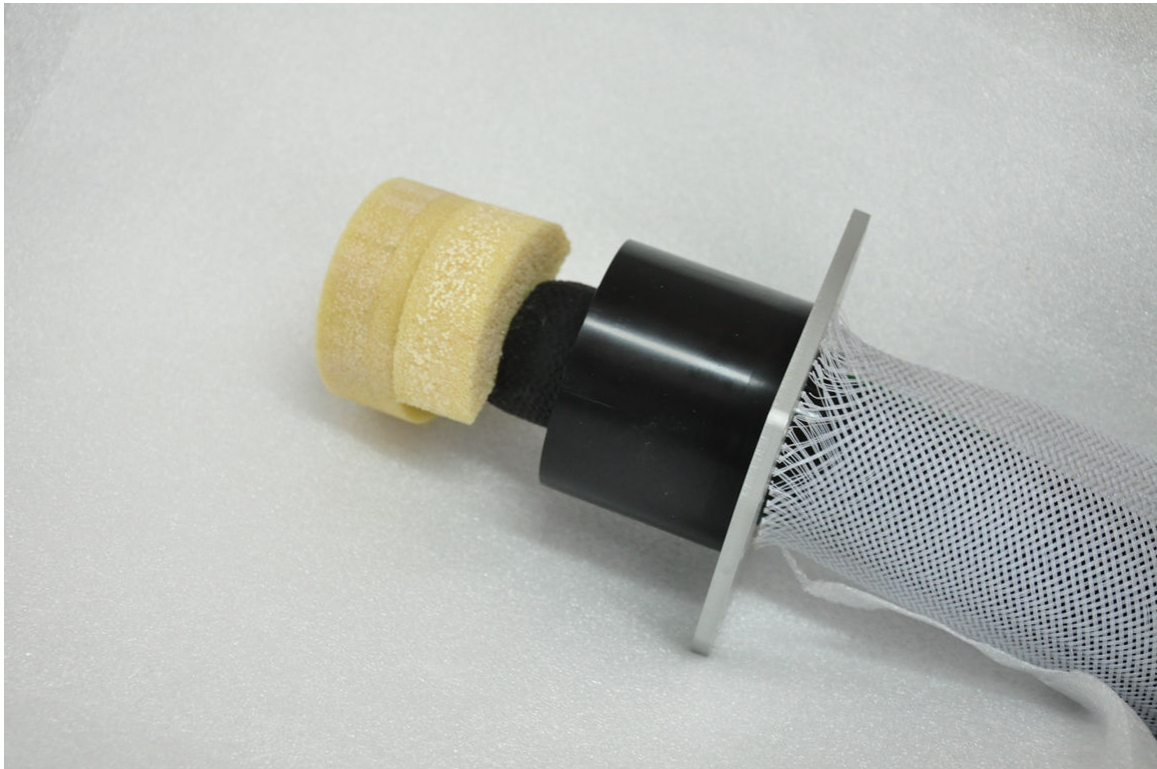


WEB: <http://www.ldcooling.com/>

Email: [info@ldcooling.com](mailto:info@ldcooling.com)

Facebook: <http://www.facebook.com/LDcooling>

2. Install two halves of insulation blocks from original mounting on evaporator head and than just slide the outer evaporator clam shell over the insulation (NEW mounting).



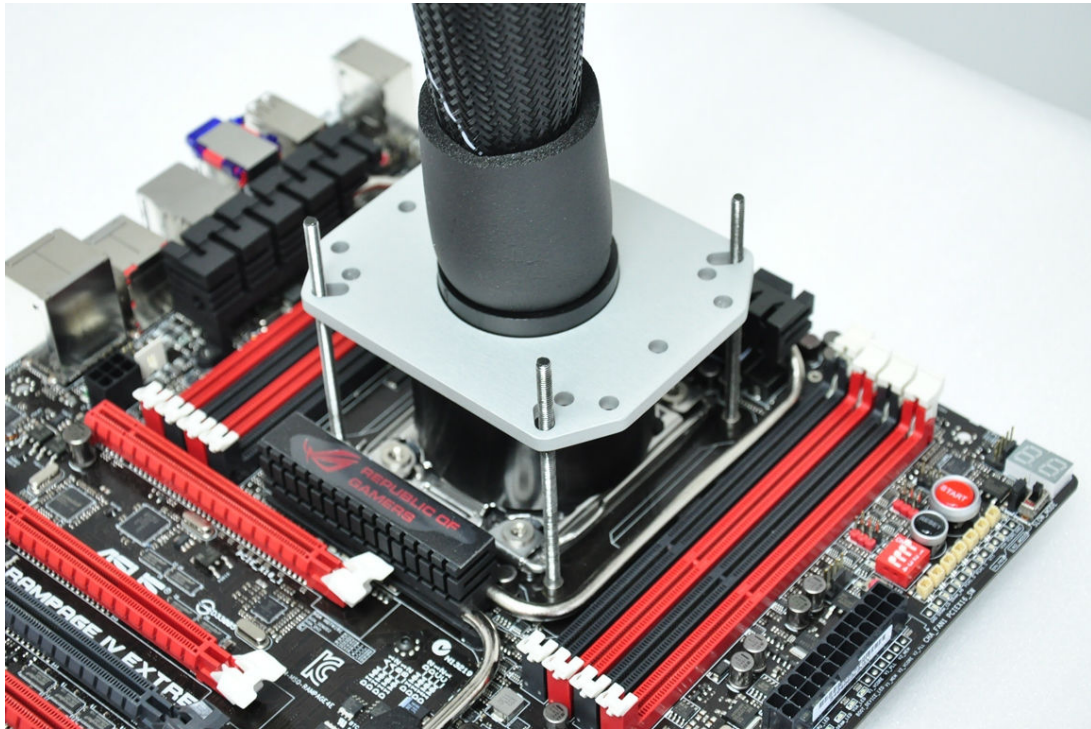
WEB: <http://www.ldcooling.com/>

Email: [info@ldcooling.com](mailto:info@ldcooling.com)

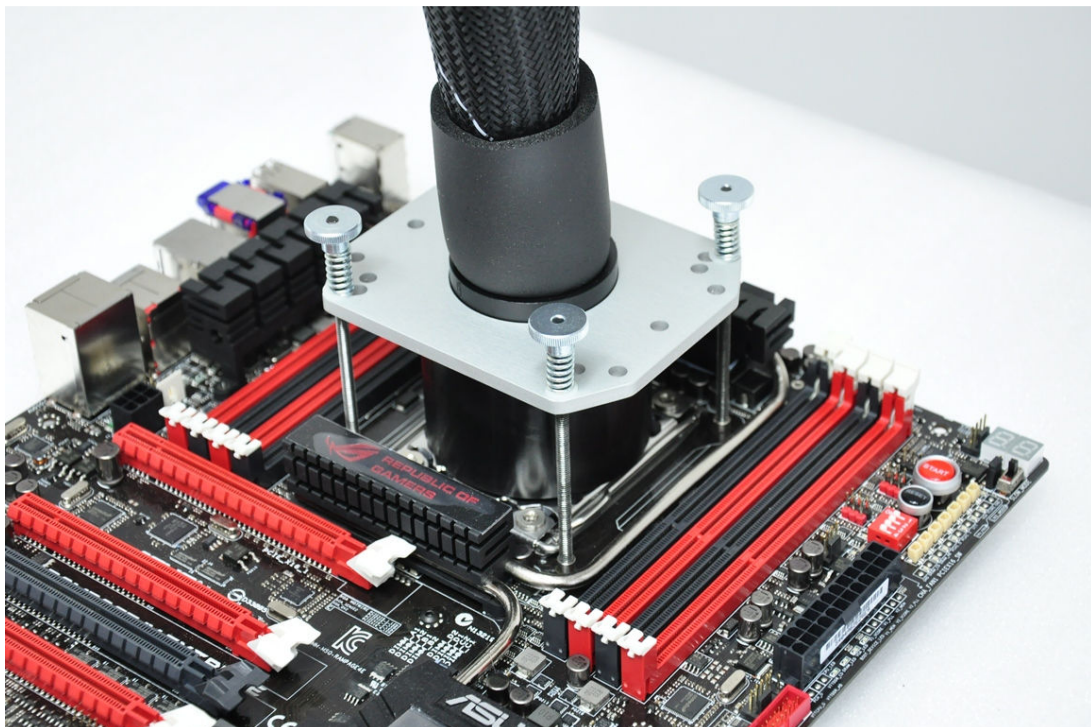
Facebook: <http://www.facebook.com/LDcooling>



3. Now you only need to use some thermal paste (Artic Ceramique is recommended for sub-zero temps) and install universal mounting kit on motherboard.



Use Washers, Springs and Thumb Screws and tighten it.



If you have any other question about Universal Mounting Kit or Insulation you can send us email on: [info@ldcooling.com](mailto:info@ldcooling.com) or contact shop where you bought it.

WEB: <http://www.ldcooling.com/>

Email: [info@ldcooling.com](mailto:info@ldcooling.com)

Facebook: <http://www.facebook.com/LDcooling>